

NEW

ELECTRIC PUNCH & BIND MACHINE WITH INTERCHANGEABLE DIES

MODEL: CWP

4-IN-1

ALSO AVAILABLE:
MANUAL CWP



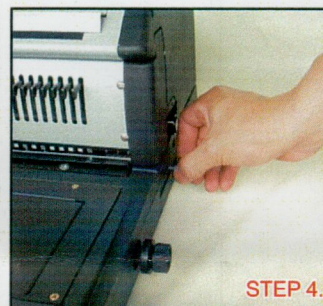
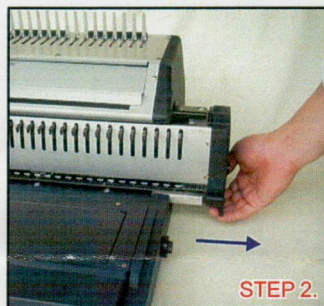
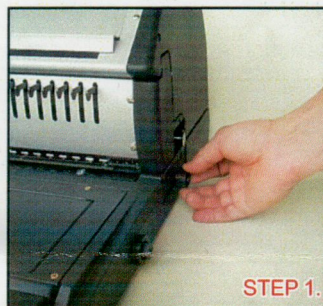
INTERCHANGEABLE "EZ SLIDE" SYSTEM!!!

YOU CAN CHOOSE DIFFERENT
DIE SETS PER YOUR NEED!

OUR CWP HAS 4 DIE SETS:

- PLASTIC BINDING COMBS
- 2:1 WIRE
- 3:1 WIRE
- 4:1 COIL

THE ULTIMATE "4-IN-1" PUNCH & BIND MACHINE!!!



● DIMENSIONS	22.2" X 27.4" X 14.0" (56.3 X 69.6 X 35.9CM)
● NET WEIGHT	95.9 LBS (43.5 KGS)
● SHIPPING WEIGHT	102.1 LBS (46.3 KGS)
● PRODUCTION RATE	PUNCHING 5,000 SHEETS/HR BINDING 250 BOOKS/HR
● PUNCH CAPACITY	20 LB/80 GM 20 SHEETS/PUNCH
● PUNCHING & BINDING LENGTH	14"
● 4 CHANGEABLE DIE SETS	PLASTIC BINDING COMBS 3:1 WIRE 2:1 WIRE 4:1 COIL
● CONSTRUCTION	ALL METAL
● WITH FOOT PEDAL	YES
● DISENGAGEABLE PUNCH PINS	YES
● DEPTH ADJUSTMENT	YES
● SIDE MARGIN CONTROL	YES
● BUILT IN COMB SPREADER	YES
● BUILT IN WIRE HOLDER	YES
● BUILT IN WIRE CLOSER	YES (CONCEALED IN FRONT COMPARTMENT)
● BUILT IN COIL CHANNEL	YES (FOR MANUAL COIL INSERTION)



DISTRIBUTED BY: