

# HSM StoreEx HDS 150 - 40 mm



## HSM StoreEx HDS 150 digital data media shredder

The HSM StoreEx HDS 150 digital data media shredder destroys digital media devices in a safe and economical way – and is data protection compliant as well.

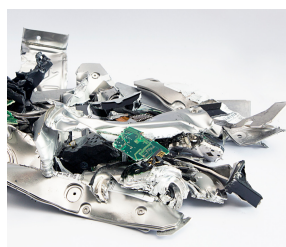
### Technical data

<b>Order number:</b>	1772111	<b>Cutting capacity HDD 2,5":</b>	1200,0 St/H
<b>EAN</b>	4026631054652	<b>Cutting capacity CD/DVD:</b>	4200 St/h
<b>Cutting type:</b>	strip cut	<b>Cutting capacity magnetic tapes:</b>	280 St/h
<b>Cutting size:</b>	40 mm	<b>Loading aperture Length x Width x Height:</b>	290 x 165 x 60 mm
<b>Security level (DIN 66399):</b>	E-2   H-3 security cut   T-1	<b>Noise level (idle operation):</b>	ca. 61 dB(A)
<b>Driving power:</b>	1,5 kW	<b>Width x Depth x Height:</b>	1200 x 815 x 1325 mm
<b>Voltage / Frequency:</b>	220-240 V / 50 Hz/60 Hz	<b>Weight:</b>	534 kg
<b>Intake width:</b>	165 mm	<b>Shredder material:</b>	Staples and paper clips, Credit card, CD/DVD, Floppy disk, Hard drives up to 3.5", Magnetic tapes up to 3.5"
<b>Container volume / collecting:</b>	40 l		
<b>Cutting capacity HDD up to 3,5":</b>	210 St/h		

### Product information



The waste container can be easily removed and emptied.

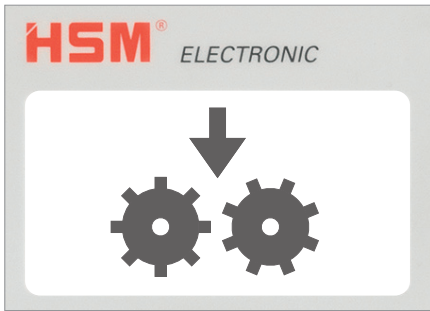


A conventional 3.5 inch hard disk is cut into at least three parts ("H-3 security cut"). The security level is thus many times higher than with conventional methods.



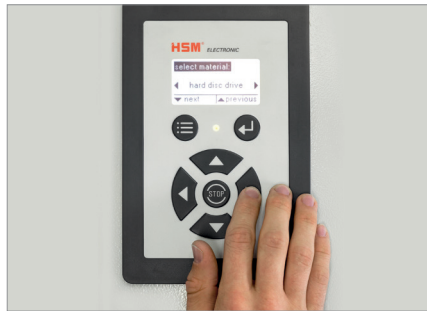
The digital data media shredder is operated with single-phase power connection.

**HSM**®



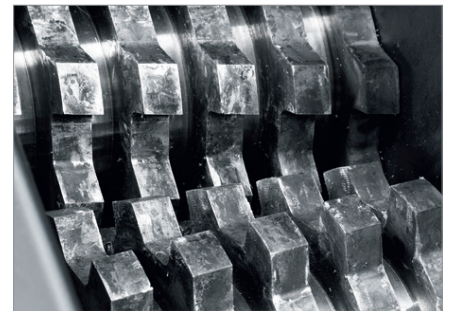
**Continuous energy-saving operation with low noise level**

This powerful machine provides an excellent cutting performance combined with reliable continuous operation and a low noise level.



**Convenient operation via the membrane keypad with display**

The selection of the correct functional mode will always ensure maximum throughput for the respective material type.



**Solid steel cutting rollers**

The induction-hardened, solid steel cutting rollers are robust and ensure a long operating life.



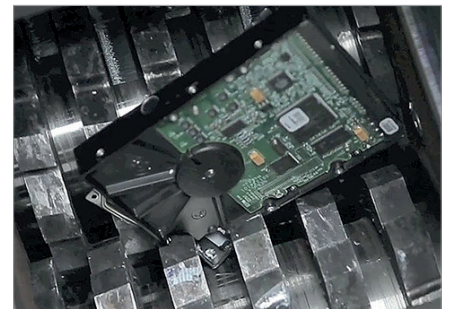
**LED display for continuous input of media**

The large and clearly visible LED display enables the continuous input of media at a comfortable working height.



**For decentralised destruction**

Data media can be shredded easily in decentralised locations with this machine.



**Material anti-jam function**

The automatic reverse function rectifies material jams and ensures smooth shredding operations.

